



MPC-B

R454b Multi-Split Systems



The MPC multi-split heat pump system provides quiet, powerful performance with a high efficiency inverter outdoor heat pump, matched with two to five indoor fan coils. Hyper Heat and standard systems are available.

Our advanced inverter technology delivers powerful heating and cooling performance while consuming less energy and using less space than a standard 1:1 split system.

Several styles and sizes of indoor units are available, to suit any application.



Ducted and Non-Ducted units can be combined, for greater design flexibility. Indoor fan coils can be sized up to 30% above the outdoor heat pump capacity.

One outdoor heat pump can power 2 to 6 indoor units, and each indoor unit can be controlled independently for maximum efficiency and comfort. Units can be controlled by wireless remote controllers or programmable wired wall controllers.



Superior Flexibility

System Ratings

High Efficiency

Outdoor HP	Indoor Fan Coil Type	SEER2	EER2	HSPF2	BTU Cooling	BTU Heating	Heating @ 5°F
18MPC3-HE-B	Ducted Only (HCHP)	20.00	12.0	10.0	18,000	19,000	14,600
	Non-Ducted Only (HWMS, CCHP and MMNC)	25.10	14.0	9.8	18,000	19,000	13,500
	Mixed (HCHP, HWMS, CCHP and MMNC)	22.55	13.0	9.9	18,000	19,000	14,000
27MPC4-HE-B	Ducted Only (HCHP and MPHP)	21.00	12.0	9.0	26,600	26,600	18,800
	Non-Ducted Only (HWMS, CCHP and MMNC)	25.00	13.0	9.5	27,000	27,000	19,000
	Mixed (HCHP, HWMS, CCHP, MPHP and MMNC)	23.00	12.5	9.3	26,800	26,800	18,900
36MPC5-HE-B	Ducted Only (HCHP and MPHP)	20.00	11.7	9.2	35,000	37,000	26,000
	Non-Ducted Only (HWMS, CCHP and MMNC)	24.00	12.0	9.5	36,000	37,000	26,000
	Mixed (HCHP, HWMS, CCHP, MPHP and MMNC)	22.00	11.9	9.4	35,400	37,000	26,000
48MPC6-HE-B	Ducted Only (HCHP and MPHP)	20.40	12.0	10.6	45,000	47,000	38,000
	Non-Ducted Only (HWMS, CCHP and MMNC)	24.00	12.5	10.3	47,000	48,000	36,000
	Mixed (HCHP, HWMS, CCHP, MPHP and MMNC)	22.20	12.3	10.5	46,000	47,500	37,000
60MPC6-HE-B	Ducted Only (HCHP and MPHP)	18.00	10.0	9.2	60,000	60,000	40,000
	Non-Ducted Only (MMHW, CCHP and MMNC)	22.00	10.0	9.5	60,000	60,000	39,000
	Mixed (HCHP, HWMS, CCHP, MPHP and MMNC)	20.00	10.0	9.4	60,000	60,000	39,500

Hyper Heat

Outdoor HP	Indoor Fan Coil Type	SEER2	EER2	HSPF2	BTU Cooling	BTU Heating	Heating @ 5°F
18MPC3-HH-B	Ducted Only (HCHP)	20.00	13.0	10.0	19,000	20,000	18,000
	Non-Ducted Only (HWMS, CCHP and MMNC)	25.00	15.0	10.4	19,000	20,000	19,000
	Mixed (HCHP, HWMS, CCHP and MMNC)	22.50	14.0	10.2	19,000	20,000	18,500
27MPC4-HH-B	Ducted Only (HCHP and MPHP)	19.00	12.0	9.5	28,000	28,000	27,000
	Non-Ducted Only (HWMS, CCHP and MMNC)	23.00	12.5	10.5	27,000	27,000	27,000
	Mixed (HCHP, HWMS, CCHP, MPHP and MMNC)	21.00	12.3	10.0	27,400	27,400	27,000
36MPC5-HH-B	Ducted Only (HCHP and MPHP)	19.40	12.0	10.4	36,000	36,000	38,000
	Non-Ducted Only (HWMS, CCHP and MMNC)	23.00	13.0	10.7	36,000	36,000	36,000
	Mixed (HCHP, HWMS, CCHP, MPHP and MMNC)	21.20	12.5	10.6	36,000	36,000	37,000
48MPC6-HH-B	Ducted Only (HCHP and MPHP)	20.40	11.7	11.0	47,000	48,000	48,000
	Non-Ducted Only (HWMS, CCHP and MMNC)	23.00	12.0	11.0	47,000	49,000	47,000
	Mixed (HCHP, HWMS, CCHP, MPHP and MMNC)	21.70	11.9	11.0	47,000	48,500	47,500
55MPC6-HH-B	Ducted Only (HCHP and MPHP)	20.00	11.7	10.7	53,000	55,000	48,000
	Non-Ducted Only (MMHW, CCHP and MMNC)	22.20	12.0	10.5	51,000	55,000	47,000
	Mixed (HCHP, HWMS, CCHP, MPHP and MMNC)	21.10	11.9	10.6	52,000	55,000	47,500

Indoor units combined can be sized up to 30% above the outdoor unit size. Please refer to combo tables.

High Wall

Model Name		6HWMS0-C-S-B	9HWMS0-C-S-B	12HWMS0-C-S-B	18HWMS0-C-S-B	24HWMS0-C-S-B
Performance						
Cooling capacity	Btu/h	6,000	9,000	12,000	18,000	23,000
Heating capacity	Btu/h	6,000	9,000	12,000	18,000	24,000
Power	V/Hz/f	208~230/60/1	208~230/60/1	208~230/60/1	208~230/60/1	208~230/60/1
Minimum Circuit Ampacity	A	3.0	3.0	3.0	3.0	3.0
Max Breaker Size	A	15.00	15.00	15.00	15.00	15.00
Air flow (Turbo/Hi/Med/Low)	m3/h	500/400/300/240	650/500/330/260	650/500/330/261	1290/850/750/630	1290/1000/780/650
	CFM	294/235/177/141	383/294/194/153	383/294/194/153	759/500/441/371	759/588/459/383
Noise Level (T/H/M/L)	dB(A)	42/37/32/24	40/33/24/21	42/36/23/20	55/45/40/25	55/50/44/35
Net Dimension (WxDxH)	mm	729×200×292	802×200×295	802×200×295	1082×234×337	1082×234×337
	inch	28.7x7.87x11.50	31.57x7.87x11.61	31.57x7.87x11.61	42.6x9.21x13.27	42.60x9.21x13.27
Net Weight	kg	8.0	8.6	8.6	13.8	14.0
	lbs	17.6	19.0	19.0	30.4	30.9
Package Dimension (WxDxH)	mm	790x270x375	875x278x380	920x310x370	1155x415x315	1155x415x315
	inch	31.1x10.6x14.8	34.5x11.2x15.0	34.5x11.2x15.0	45.5x16.4x12.4	50.4x14.2x17.9
Gross Weight	kg	10.5	11.0	11.0	18.0	18.4
	lbs	23.2	24.3	24.3	39.7	40.6
Diameter(Liquid)	mm	6.35	6.35	6.35	6.35	9.52
	inch	1/4	1/4	1/4	1/4	3/8
Diameter(Suction)	mm	9.52	9.52	9.52	12.7	15.88
	inch	3/8	3/8	3/8	1/2	5/8



6HWMS0-C-S-B
9HWMS0-C-S-B
12HWMS0-C-S-B



18HWMS0-C-S-B
24HWMS0-C-S-B

Four Way Cassette

Model Name		9CCHP0-C-S-B	12CCHP0-C-S-B	18CCHP0-C-S-B	24CCHP0-C-S-B
Performance					
Cooling capacity	Btu/h	9,000	12,000	16,000	24,000
Heating capacity	Btu/h	10,000	12,000	18,000	25,000
Power	V/Hz/f	208~230/60/1	208~230/60/1	208~230/60/1	208~230/60/1
Power input	W	45	45	45	65
RLA	A	0.90	1.00	1.50	1.00
Degrees of protection		IPX4	IPX0	IPX0	IPX0
Air flow (Hi/Med/Low)	m3/h	600/520/460	644/525/444	955/824/746	1200/1079/930
	CFM	353/306/271	379/309/261	562/485/439	706/635/547
Noise Level (H/M/L)	dB(A)	37.5/34.5/31.5	40.5/35.5/31.5	43.5/38.5/35.5	49/46/43
Net Dimension (WxDxH)	mm	570x570x260	570x570x260	570x570x260	830x830x205
	inch	22.44x22.44x10.24	22.44x22.44x10.24	22.44x22.44x10.24	32.68x32.68x8.07
Net Weight	kg	14.5	16	16.2	21.4
	lbs	32	35.3	35.7	47.2
Package Dimension (WxDxH)	mm	662x662x317	662x662x317	662x662x317	910x910x250
	inch	26x26x12.5	26x26x12.5	26x26x12.5	35.8x35.8x9.85
Gross Weight	kg	17.3	18.6	21.3	25.1
	lbs	38.14	41	47	55.4
Diameter(Liquid)	mm	6.35	6.35	6.35	9.52
	inch	1/4	1/4	1/4	3/8
Diameter(Gas)	mm	9.52	12.7	12.7	15.88
	inch	3/8	1/2	1/2	5/8



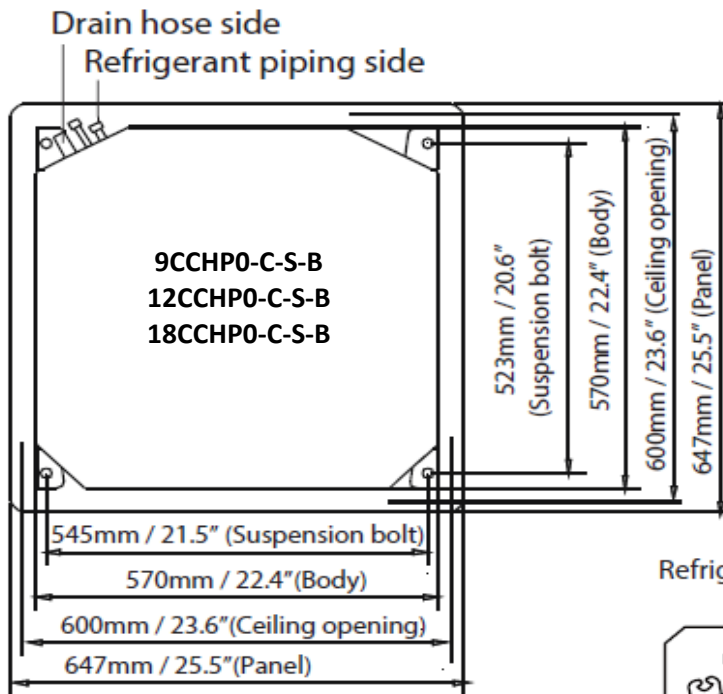
9CCHP0-C-S-B
12CCHP0-C-S-B



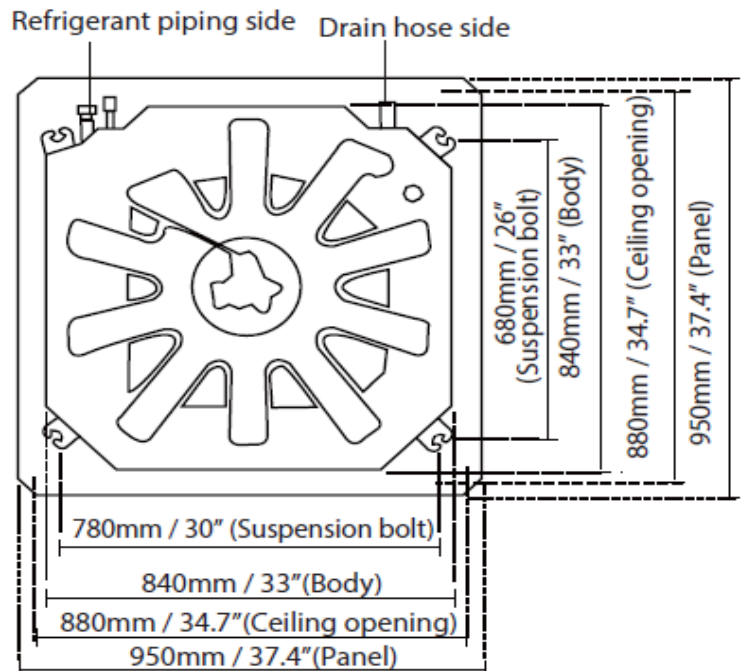
24CCHP0-C-S-B

Four Way Cassette Ceiling Openings

Model Name		9CCHP0-C-S-B	12CCHP0-C-S-B	18CCHP0-C-S-B	24CCHP0-C-S-B
Unit Dimensions (WxDxH)	mm	570x570x260	570x570x260	570x570x260	830x830x205
	inch	22.44x22.44x10.24	22.44x22.44x10.24	22.44x22.44x10.24	32.68x32.68x8.07
Ceiling Opening Dimensions (WxD)	mm	600x600	600x600	600x600	840x840
	inch	23.6x23.6	23.6x23.6	23.6x23.6	34.7x34.7



24CCHP0-C-S-B



One Way Cassette

Model Name		6MMNC0-HP-B	9MMNC0-HP-B	12MMNC0-HP-B	18MMNC0-HP-B
Performance					
Cooling capacity	Btu/h	6,500	9,000	12,000	16,700
Heating capacity	Btu/h	7,100	10,900	12,500	20,000
Power	V/Hz/f	208~230/60/1	208~230/60/1	208~230/60/1	208~230/60/1
Power input	W	40	40	45	45
RLA	A	0.80	0.80	1.00	1.5
Degrees of protection		IPX4	IPX0	IPX0	IPX0
Air flow (Hi/Med/Low)	m3/h	500/440/400	500/440/400	530/480/420	598/510/352
	CFM	294/259/235	294/259/235	312/282/247	352/300/207
Noise Level (H/M/L)	dB(A)	37.5/35.5/32.5	37.5/35.5/32.5	38.5/37/32.5	44/40.5/35
Net Dimension (WxDxH)	mm	1278x335x228	1278x335x228	1278x335x228	1278x335x228
	inch	50.31x13.19x8.98	50.31x13.19x8.98	50.31x13.19x8.98	50.31x13.19x8.98
Net Weight	kg	19.9	19.9	20.5	20.5
	lbs	43.87	43.87	45.19	45.19
Package Dimension (WxDxH)	mm	1463x571x575	1463x571x575	1463x571x575	1463x571x575
	inch	57.6x22.5x22.6	57.6x22.5x22.6	57.6x22.5x22.6	57.6x22.5x22.6
Gross Weight	kg	36.9	36.9	37.6	37.6
	lbs	81.35	81.35	82.89	82.89
Diameter(Liquid)	mm	6.35	6.35	6.35	6.35
	inch	1/4	1/4	1/4	1/4
Diameter(Gas)	mm	9.52	9.52	9.52	9.52
	inch	3/8	3/8	3/8	3/8



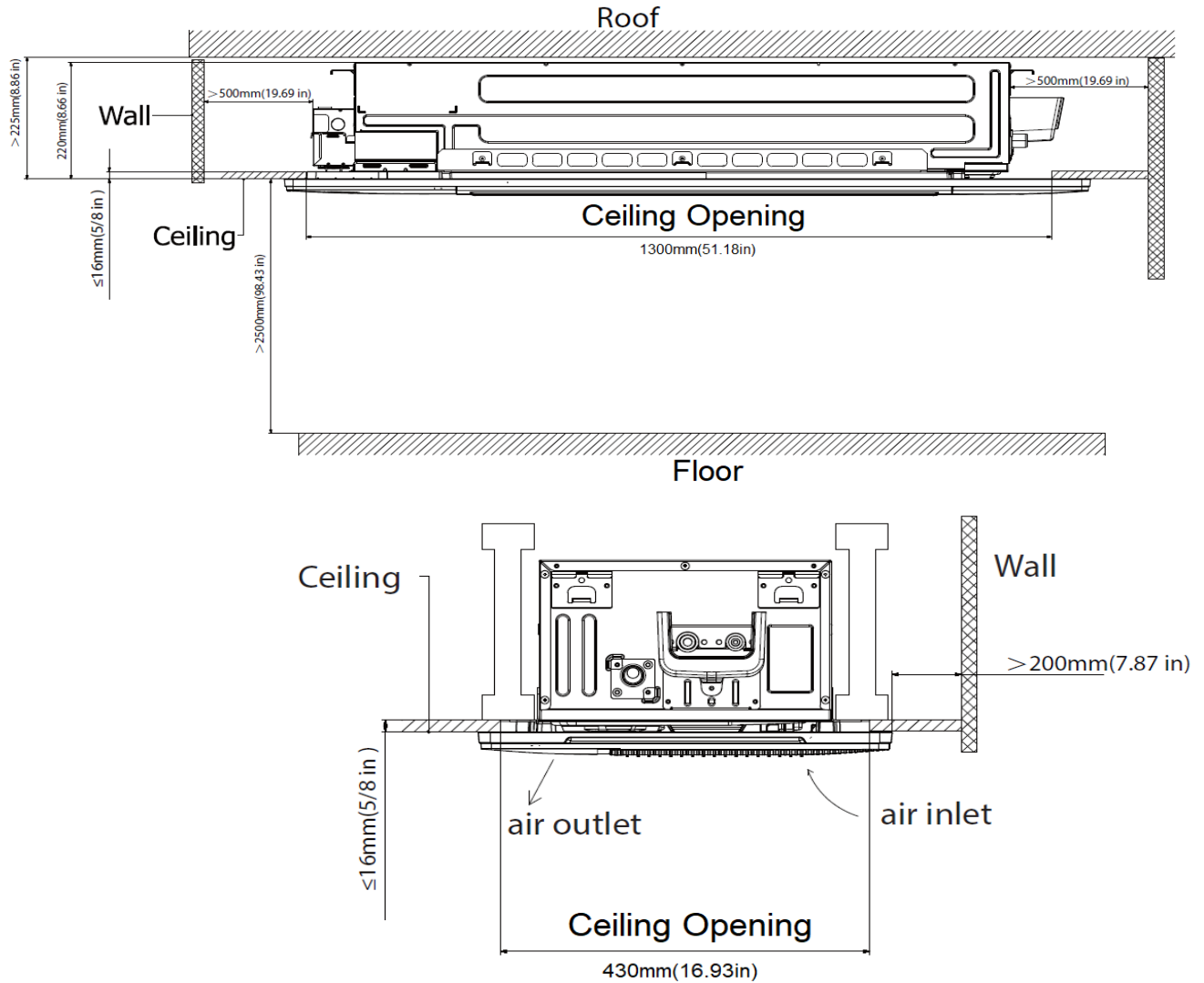
6MMNC0-HP-B
 9MMNC0-HP-B
 12MMNC0-HP-B
 18MMNC0-HP-B

One Way Cassette Ceiling Openings

Model Name		6MMNC0-HP-B	9MMNC0-HP-B	12MMNC0-HP-B	18MMNC0-HP-B
Net Dimensions (WxDxH)	mm	1278x335x228	1278x335x228	1278x335x228	1278x335x228
	inch	50.31x13.19x8.98	50.31x13.19x8.98	50.31x13.19x8.98	50.31x13.19x8.98
Ceiling Opening Dimensions (WxD)	mm	1300x430	1300x430	1300x430	1300x430
	inch	51.18x16.93	51.18x16.93	51.18x16.93	51.18x16.93

Note:

All MMNC series units have the same Ceiling Opening Dimensions



Floor / Ceiling Console

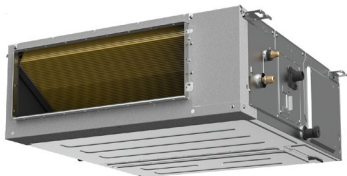
Model Name		9FSHP0-HP-B	12FSHP0-HP-B	18FSHP0-HP-B
Performance				
Cooling capacity	Btu/h	9,000	12,000	16,700
Heating capacity	Btu/h	10,900	12,500	20,000
Power	V/Hz/f	208~230/60/1	208~230/60/1	208~230/60/1
Power input	W	130	130	90
RLA	A	1.11	1.11	1.20
Air flow (Hi/Med/Low)	m3/h	640/550/454	640/550/454	750/650/550
	CFM	376/324/265	376/324/265	441/382/324
Noise Level (H/M/L)	dB(A)	40.0/37.0/26.0	40.0/37.0/26.0	45.0/43.5/30.5
Net Dimension (WxDxH)	mm	794x200x621	794x200x621	794x200x621
	inch	31.26x7.87x24.45	31.26x7.87x24.45	31.26x7.87x24.45
Net Weight	kg	14.9	14.9	14.9
	lbs	32.85	32.85	32.85
Package Dimension (WxDxH)	mm	865x280x719	865x280x719	865x280x719
	inch	36.1x11.1x28.3	36.1x11.1x28.3	36.1x11.1x28.3
Gross Weight	kg	18.8	18.8	18.8
	lbs	41.45	41.45	41.45
Diameter(Liquid)	mm	6.35	6.35	6.35
	inch	1/4	1/4	1/4
Diameter(Gas)	mm	9.52	9.52	9.52
	inch	3/8	3/8	3/8



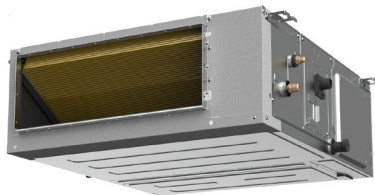
9FSHP0-HP-B
12FSHP0-HP-B

High Static Horizontal Ducted Soffit

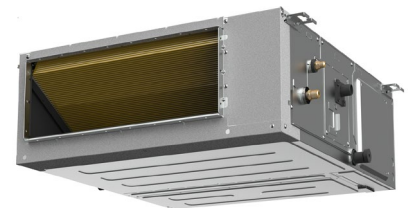
Model Name		9HHHP0-C-S-B	12HHHP0-C-S-B	18HHHP0-C-S-B	24HHHP0-C-S-B	36HHHP0-C-S-B
Performance						
Cooling capacity	Btu/h	9,000	12,000	18,000	24,000	36,000
Heating capacity	Btu/h	9,000	12,000	18,000	24,000	36,000
Power	V/Hz/f	208~230/60/1	208~230/60/1	208~230/60/1	208~230/60/1	208~230/60/1
Cooling Input	W	676	999	1315	1920	250
Heating Input	W	735.00	952.00	1500.00	2010.00	1.60
Air flow (T/H/M/L)	m3/h	585/490/392/341	712/595/435/367	1200/1050/900/750	1450/1200/1050/850	1839/1551/1195
	CFM	344/288/231/201	419/350/256/216	706/618/530/441	854/706/618/500	1082 / 912 / 703
External Static Pressure Range	Pascal	0 - 200	0 - 200	0 - 200	0 - 200	0 - 200
	in/WG	0 - 0.80	0 - 0.80	0 - 0.80	0 - 0.80	0 - 0.80
Noise Level (Sound Pressure)	dB(A) (H/M/L)	30.5/29.5/28.5	33.5/32.5/31	37/35/33	40/38/35.5	49.5 / 46.5 / 43
Net Dimension (WxDxH)	mm	700×750×245	700×750×245	1000×750×245	1000×750×245	1360 x 774 x 249
	inch	27.6 x 29.5 x 9.7	27.6 x 29.5 x 9.7	39.4 x 29.5 x 9.7	39.4x 29.5x 9.7	53.5 x 30.5 x 9.8
Net Weight	kg	29.1	29.1	36.2	36.5	50.3
	lbs	64.2	64.2	79.8	80.5	110.9
Package Dimension (WxDxH)	mm	925×850×298	925×850×298	1225×860×304	1225×860×304	1570 x 805 x 330
	inch	36.4 x 33.5 x 11.7	36.4 x 33.5 x 11.7	48.2 x 33.9 x 12.0	48.2x33.9x12.0	61.8 x 31.7 x 13.0
Gross Weight	kg	33.5	33.5	41.4	41.7	58.1
	lbs	73.9	73.9	91.3	91.9	128.1
Diameter(Liquid)	mm	6.35	6.35	6.35	9.52	9.52
	inch	1/4	1/4	1/4	3/8	3/8
Diameter(Gas)	mm	9.52	9.52	12.7	15.9	19.0
	inch	3/8	3/8	1/2	5/8	3/4



9HHHP0-C-S-B
12HHHP0-C-S-B



18HHHP0-C-S-B
24HHHP0-C-S-B



36HHHP0-C-S-B

Horizontal Ducted Soffit Solid Ceiling Access Panels

PANEL MODEL NUMBER	INSIDE FRAME OPENING		OUTSIDE FRAME OPENING		FAN COIL MODEL
	A	B	E	F	
CAP4824-S	48	24	51	27	9HCHP0-C, 12HCHP0-C
CAP5531-S	55	31	58	34	18HCHP0-C
CAP6435-S	64	35	67	38	24HCHP0-C
CAP7435-S	74	35	77	38	36HCHP0-C

Design

- Interior Panel Braces
- Integrated Clips in Panel Frame
- Single Piece Wrapped Frame with 90° Squared Corner Seams
- Captive Screw Retainers

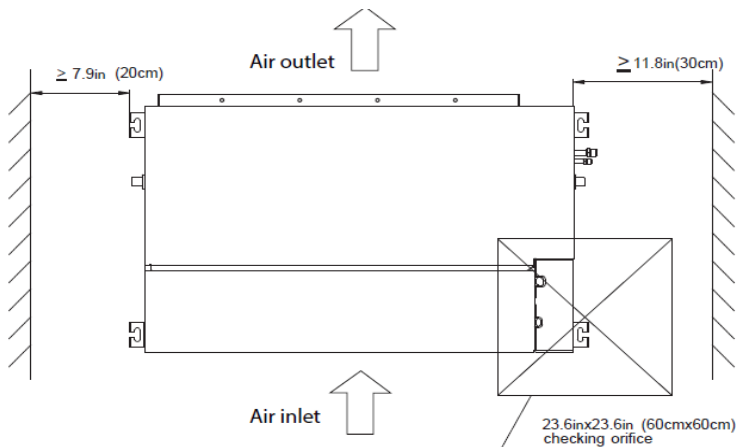


Materials

- Heavy Gauge Galvanized Steel Construction with Off-White Powder Paint Finish
- Stainless Steel Screws with Protective Washers

Packaging

- Individually Wrapped and Individually Packaged with Heavy-Duty Cartons
- Interior Glossy Label with Panel Model Number and Barcode



Size the Ceiling Opening to the Inside Frame Opening (shown above), to allow for approximately 20 inches for hanging and access to refrigerant connections, drain connections and electrical.

Multi-Position

Model Name		18MPHP0-S-B	24MPHP0-S-B	30MPHP0-S-B	36MPHP0-S-B
Performance					
Cooling capacity	Btu/h	18,000	23,000	30,000	36,000
Heating capacity	Btu/h	19,000	26,000	30,000	38,000
Power	V/Hz/f	208~230/60/1	208~230/60/1	208~230/60/1	208~230/60/1
Power input	W	67.8	67.8	168	168
RLA	A	2.00	3.00	3.50	4.00
Air flow (H/M/L)	m3/h	1050/979/899/829	1400/1290/1179/1069	1679/1519/1369/1210	2018/1838/1650/1470
	CFM	618/576/529/488	824/759/694/629	988/894/806/712	1188/1082/971/865
External Static Pressure Range	Pascal	0 - 249	0 - 249	0 - 249	0 - 249
	in/WG	0 - 1.00	0 - 1.00	0 - 1.00	0 - 1.00
Noise Level (Sound Pressure)	dB(A) (H/M/L)	42 / 40 / 35	43 / 40.5 / 35	45 / 42.5 / 38	46.5 / 43 / 38
Net Dimension (WxDxH)	mm	534 x 445 x 1143	534 x 445 x 1143	534 x 534 x 1245	534 x 534 x 1245
	inch	21.02 x 17.52 x 45.0	21.02 x 17.52 x 45.0	21.02 x 21.02 x 49.02	21.02 x 21.02 x 49.02
Net Weight	kg	48.4	48.4	58.8	58.8
	lbs	106.7	106.7	129.6	129.6
Package Dimension (WxDxH)	mm	675 x 530 x 1235	676 x 530 x 1235	675 x 620 x 1335	675 x 620 x 1335
	inch	26.57 x 20.87 x 48.62	26.57 x 20.87 x 48.63	26.57 x 24.41 x 52.56	26.57 x 24.41 x 52.56
Gross Weight	kg	57.7	57.7	69.4	69.4
	lbs	127.21	127.21	153.0	153.0
Diameter(Liquid)	mm	6.35	9.52	9.52	9.52
	inch	1/4	3/8	3/8	3/8
Diameter(Gas)	mm	12.7	15.9	15.9	15.9
	inch	1/2	5/8	5/8	5/8





MPC-HE-B

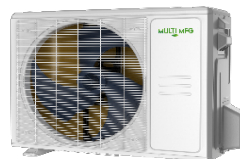
High Efficiency Outdoor Multi-Split Heat Pump

Model Name		18MPC3-HE-B	27MPC4-HE-B	36MPC5-HE-B	48MPC6-HE-B	60MPC6-HE-B
Energy Star (Cold Climate Split HP)		Yes	No	Yes	Yes	No
Energy Star (Meets Peak Cooling Req)		Yes	No	Yes	Yes	No
Performance						
Rated Cooling Capacity (95°F)	Btu/h	18,000	26,000	35,000	45,000	60,000
Cooling Capacity Range (95°F)	Btu/h	5,400 - 21,600	7,200 - 32,000	9,000 - 40,000	12,000 - 49,000	19,000 - 62,000
Rated Heating Capacity (47°F)	Btu/h	19,000	27,000	37,000	48,000	60,000
Heating Capacity Range (47°F)	Btu/h	5,700 - 21,600	8,400 - 29,200	10,000 - 40,000	13,000 - 55,000	20,000 - 60,000
Sound						
Outdoor Noise Level (Full)	dB(A)	60	61	63	65	65
Electrical						
Power	V/Hz/f	208~230/60/1	208~230/60/1	208~230/60/1	208~230/60/1	208~230/60/1
Rated Current Cooling	A	6.2	10.0	13	17.3	26.2
Rated Input Power Cooling	W	1440	2130	2915	3850	6000
Rated Current Heating	A	6.6	10	14	17.3	22.0
Rated Input Power Heating	W	1465	2198	3098	3908	5024
Minimum Circuit Ampacity	A	16.0	23.0	30.5	34.0	36.0
Max Breaker Size	A	20.0	25.0	35.0	40.0	40.0
Outdoor Operating Temp Range						
Cooling	°F	-13~122	-13~122	-13~122	-22~122	-13~122
	°C	-25~50	-25~50	-25~50	-30~50	-25~50
Heating	°F	-13~75	-13~75	-13~75	-22~75	-13~75
	°C	-25~24	-25~24	-25~24	-30~24	-25~24
Linesets						
Liquid Line (Qty)	inch	1/4 (3)	1/4 (4)	1/4 (5)	1/4 (6)	1/4 (6)
	mm	6.35 (3)	6.35 (4)	6.35 (5)	6.35 (6)	6.35 (6)
Suction Line (Qty)	inch	3/8 (3)	3/8 (3) & 1/2(1)	3/8 (3) & 1/2(2)	3/8 (4) & 1/2(2)	3/8 (4) & 1/2(2)
	mm	9.52 (3)	9.52(3) & 12.7(1)	9.52(3) & 12.7(2)	9.52(4) & 12.7(2)	9.52(4) & 12.7(2)
Total Max Pipe Length	ft (m)	197 (60)	262 (80)	262 (80)	262 (80)	262 (80)
Each Max Pipe Length	ft (m)	98 (30)	115 (35)	115 (35)	115 (35)	115 (35)
Max Lift (IDU above ODU)	ft (m)	49 (15)*	49 (15)*	49 (15)*	49 (15)*	49 (15)*
Max Lift (ODU above IDU)	ft (m)	49 (15)*	49 (15)*	49 (15)*	49 (15)*	49 (15)*
Pre-Charge Pipe Length	ft (m)	49 (15)	74 (22.5)	98 (30)	123 (37.5)	123 (37.5)
Refrigerant		R454b	R454b	R454b	R454b	R454b
Refrigerant Charge	oz	61.73	84.66	120.63	148.15	151.68
Additional Charge Per ft	oz	0.16	0.16	0.16	0.16	0.16
Physical Data						
Unit Dimensions (H x W x D)	inch	35.04X13.46X26.38	37.24x16.14x31.88	37.24x16.14x31.88	37.48x16.34x52.43	37.48x16.34x52.48
	mm	890X342X673	946x410x810	946x410x810	952x415x1333	952x415x1333
Unit Weight	lb (kg)	101 (45)	139 (63)	169 (77)	222 (101)	238 (108)

* For Vertical Lift above 49', please refer to "01-01-2024 MPC Multi Split Vertical Lift Bulletin"



18MPC3-HE-B



27MPC4-HE-B

36MPC5-HE-B
48MPC6-HE-B
60MPC6-HE-B





MPC-HH-B

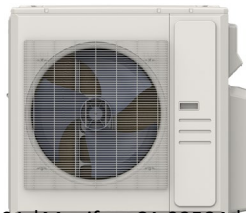
Hyper Heat Outdoor Multi-Split Heat Pump

Model Name		18MPC3-HH-B	27MPC4-HH-B	36MPC5-HH-B	48MPC6-HH-B	55MPC6-HH-B
Energy Star (Cold Climate Split HP)		No	Yes	Yes	Yes	Yes
Energy Star (Meets Peak Cooling Req)		No	Yes	Yes	Yes	Yes
Performance						
Rated Cooling Capacity (95°F)	Btu/h	19,000	28,000	36,000	48,000	55,000
Cooling Capacity Range (95°F)	Btu/h	5,400 - 27,600	7,995 - 32,826	17,900 - 42,000	19,300 - 51,000	19,000 - 58,000
Rated Heating Capacity (47°F)	Btu/h	20,000	28,000	36,500	49,000	55,000
Heating Capacity Range (47°F)	Btu/h	5,700 - 25,400	5,035 - 38,712	12,500 - 49,000	11,500 - 58,000	12,500 - 57,900
Sound						
Outdoor Noise Level (Full)	dB(A)	62	61	65	65	65
Electrical						
Power	V/Hz/f	208~230/60/1	208~230/60/1	208~230/60/1	208~230/60/1	208~230/60/1
Rated Current Cooling	A	6.5	10.0	13.2	16.8	18.7
Rated Input Power Cooling	W	1460	2250	2950	3750	4250
Rated Current Heating	A	6.8	10.0	12.4	18.0	21.2
Rated Input Power Heating	W	1503	2198	2705	3989	4741
Minimum Circuit Ampacity	A	17.5	30.0	37.0	37.0	39.5
Max Breaker Size	A	20.0	35.0	40.0	40.0	40.0
Outdoor Operating Temp Range						
Cooling	°F	-22~122	-22~122	-22~122	-22~122	-13~122
	°C	-30~50	-30~50	-30~50	-30~50	-25~50
Heating	°F	-22~75	-22~75	-22~75	-22~75	-13~75
	°C	-30~24	-30~24	-30~24	-30~24	-25~24
Linesets						
Liquid Line (Qty)	inch	1/4 (3)	1/4 (4)	1/4 (5)	1/4 (6)	1/4 (6)
	mm	6.35 (3)	6.35 (4)	6.35 (5)	6.35 (6)	6.35 (6)
Suction Line (Qty)	inch	3/8 (3)	3/8 (3) & 1/2(1)	3/8 (3) & 1/2(2)	3/8 (4) & 1/2(2)	3/8 (4) & 1/2(2)
	mm	9.52 (3)	9.52(3) & 12.7(1)	9.52(3) & 12.7(2)	9.52(4) & 12.7(2)	9.52(4) & 12.7(2)
Total Max Pipe Length	ft (m)	197 (60)	262 (80)	262 (80)	262 (80)	262 (80)
Each Max Pipe Length	ft (m)	98 (30)	115 (35)	115 (35)	115 (35)	115 (35)
Max Lift (IDU above ODU)	ft (m)	49 (15)*	49 (15)*	49 (15)*	49 (15)*	49 (15)*
Max Lift (ODU above IDU)	ft (m)	49 (15)*	49 (15)*	49 (15)*	49 (15)*	49 (15)*
Pre-Charge Pipe Length	ft (m)	49 (15)	74 (22.5)	98 (30)	123 (37.5)	123 (37.5)
Refrigerant		R454b	R454b	R454b	R454b	R454b
Refrigerant Charge	oz	78.31	120.63	134.04	151.68	151.68
Additional Charge Per ft	oz	0.16	0.16	0.16	0.16	0.16
Physical Data						
Unit Dimensions (W x D x H)	inch	37.24x16.14x31.89	37.24x16.14x31.89	38.58x16.34x38.33	37.48x16.34x52.48	37.48x16.34x52.48
	mm	946x410x810	946x410x810	1145x500x1080	952x415x1333	952x415x1333
Unit Weight	lb (kg)	138 (63)	168 (76)	212 (96)	246 (112)	246 (112)

* For Vertical Lift above 49', please refer to "01-01-2024 MPC Multi Split Vertical Lift Bulletin"



18MPC3-HH-B
27MPC4-HH-B



36MPC5-HH-B



48MPC6-HH-B
55MPC6-HH-B

Combination Table 18MPC3-HE

Two Units	Three units	
6+6	6+6+6	6+6+9
6+9	6+6+12	6+9+9
6+12		
9+9		
9+12		
12+12		

Combination Table 18MPC3-HH

Two Units	Three units	
6+6	6+6+6	6+6+9
6+9	6+6+12	6+9+9
6+12		
9+9		
9+12		
12+12		

Combination Table 27MPC4-HE

Two units	Three units		Four Units
6+12	6+6+6	6+12+12	6+6+6+6
6+18	6+6+9	6+12+18	6+6+6+9
9+9	6+6+12	9+9+9	6+6+6+12
9+12	6+6+18	9+9+12	6+6+9+9
9+18	6+9+9	9+9+18	6+6+9+12
12+12	6+9+12	9+12+12	6+9+9+9
12+18	6+9+18	12+12+12	6+9+9+12
18+18			
12+24			

Combination Table 27MPC4-HH

Two units	Three units		Four Units
6+12	6+6+6	6+12+12	6+6+6+6
6+18	6+6+9	6+12+18	6+6+6+9
9+9	6+6+12	9+9+9	6+6+6+12
9+12	6+6+18	9+9+12	6+6+9+9
9+18	6+9+9	9+9+18	6+6+9+12
12+12	6+9+12	9+12+12	6+9+9+9
12+18	6+9+18	12+12+12	6+9+9+12
18+18			
12+24			



MPC-SYS

Combination Table 36MPC5-HE

Two units	Three units		Four units		Five Units
6+18	6+6+12	9+9+12	6+6+6+6	6+9+9+18	6+6+6+6+9
6+24	6+6+18	9+9+18	6+6+6+9	6+9+9+24	6+6+6+6+12
9+18	6+6+24	9+9+24	6+6+6+12	6+9+12+12	6+6+6+6+18
9+24	6+9+12	9+12+12	6+6+6+18	6+9+12+18	6+6+6+9+9
12+12	6+9+18	9+12+18	6+6+6+24	6+12+12+12	6+6+6+9+12
12+18	6+9+24	9+12+24	6+6+9+9	6+12+12+18	6+6+6+12+12
12+24	6+12+12	9+18+18	6+6+9+12	9+9+9+9	6+6+9+9+9
18+18	6+12+18	12+12+12	6+6+9+18	9+9+9+12	6+6+9+9+12
18+24	6+12+24	12+12+18	6+6+9+24	9+9+9+18	6+9+9+9+9
24+24	6+18+18	12+12+24	6+6+12+12	9+9+12+12	
	6+18+24	12+18+18	6+6+12+18	9+9+12+18	
	9+9+9		6+6+12+24	9+12+12+12	
			6+9+9+9	12+12+12+12	
			6+9+9+12		

Combination Table 36MPC5-HH

Two units	Three units		Four units		Five Units
6+18	6+6+12	9+9+12	6+6+6+6	6+9+9+18	6+6+6+6+9
6+24	6+6+18	9+9+18	6+6+6+9	6+9+9+24	6+6+6+6+12
9+18	6+6+24	9+9+24	6+6+6+12	6+9+12+12	6+6+6+6+18
9+24	6+9+12	9+12+12	6+6+6+18	6+9+12+18	6+6+6+9+9
12+12	6+9+18	9+12+18	6+6+6+24	6+12+12+12	6+6+6+9+12
12+18	6+9+24	9+12+24	6+6+9+9	6+12+12+18	6+6+6+12+12
12+24	6+12+12	9+18+18	6+6+9+12	9+9+9+9	6+6+9+9+9
18+18	6+12+18	12+12+12	6+6+9+18	9+9+9+12	6+6+9+9+12
18+24	6+12+24	12+12+18	6+6+9+24	9+9+9+18	6+9+9+9+9
24+24	6+18+18	12+12+24	6+6+12+12	9+9+12+12	
	6+18+24	12+18+18	6+6+12+18	9+9+12+18	
	9+9+9		6+6+12+24	9+12+12+12	
			6+9+9+9	12+12+12+12	
			6+9+9+12		



MPC-SYS

Combination Table 48MPC6 (HE and HH Units)

Two Units	Three Units		Four Units		Five Units		Six Units
9+24	6+6+24	9+12+18	6+6+6+18	6+9+18+30	6+6+6+6+9	6+6+12+12+12	6+6+6+6+6+6
9+30	6+6+30	9+12+24	6+6+6+24	6+12+12+12	6+6+6+6+12	6+6+12+12+18	6+6+6+6+6+9
9+36	6+6+36	9+12+30	6+6+6+30	6+12+12+18	6+6+6+6+18	6+6+12+12+24	6+6+6+6+6+12
12+24	6+9+24	9+12+36	6+6+6+36	6+12+12+24	6+6+6+6+24	6+6+12+18+18	6+6+6+6+6+18
12+30	6+9+30	9+18+18	6+6+9+18	6+12+12+30	6+6+6+6+30	6+9+9+9+9	6+6+6+6+6+24
12+36	6+9+36	9+18+24	6+6+9+24	6+12+18+18	6+6+6+6+36	6+9+9+9+12	6+6+6+6+6+30
18+18	6+12+18	9+18+30	6+6+9+30	6+12+18+24	6+6+6+9+9	6+9+9+9+18	6+6+6+6+9+9
18+24	6+12+24	9+18+36	6+6+9+36	9+9+9+9	6+6+6+9+12	6+9+9+9+24	6+6+6+6+9+12
18+30	6+12+30	9+24+24	6+6+12+12	9+9+9+12	6+6+6+9+18	6+9+9+9+30	6+6+6+6+9+18
18+36	6+12+36	9+24+30	6+6+12+18	9+9+9+18	6+6+6+9+24	6+9+9+12+12	6+6+6+6+9+24
24+30	6+18+18	12+12+12	6+6+12+24	9+9+9+24	6+6+6+9+30	6+9+9+12+18	6+6+6+9+9+9
24+36	6+18+24	12+12+18	6+6+12+30	9+9+9+30	6+6+6+9+36	6+9+9+12+24	6+6+6+9+9+12
30+30	6+18+30	12+12+24	6+6+12+36	9+9+9+36	6+6+6+12+12	6+9+9+18+18	6+6+6+9+9+18
	6+18+36	12+12+30	6+6+18+18	9+9+12+12	6+6+6+12+18	6+9+12+12+12	6+6+6+9+9+24
	6+24+24	12+12+36	6+6+18+24	9+9+12+18	6+6+6+12+24	6+9+12+12+18	6+6+9+9+9+9
	6+24+30	12+18+18	6+6+18+30	9+9+12+24	6+6+6+12+30	6+9+12+12+24	6+6+9+9+9+12
	9+9+18	12+18+24	6+6+24+24	9+9+12+30	6+6+6+18+18	6+12+12+12+12	6+6+9+9+9+18
	9+9+24	12+18+30	6+9+9+12	9+9+18+18	6+6+6+18+24	6+12+12+12+18	6+6+9+9+9+24
	9+9+30	12+24+24	6+9+9+18	9+9+18+24	6+6+9+9+9	9+9+9+9+9	6+9+9+9+9+9
	9+9+36	18+18+18	6+9+9+24	9+12+12+12	6+6+9+9+12	9+9+9+9+12	6+9+9+9+9+12
	9+12+12	18+18+24	6+9+9+30	9+12+12+18	6+6+9+9+18	9+9+9+9+18	6+9+9+9+9+18
			6+9+9+36	9+12+12+24	6+6+9+9+24	9+9+9+9+24	9+9+9+9+9+9
			6+9+12+12	9+12+12+30	6+6+9+9+30	9+9+9+12+12	9+9+9+9+9+12
			6+9+12+18	9+12+18+18	6+6+9+12+12	9+9+9+12+18	9+9+9+9+9+18
			6+9+12+24	9+12+18+24	6+6+9+12+18	9+9+9+12+24	
			6+9+12+30	12+12+12+12	6+6+9+12+24	9+9+12+12+12	
			6+9+12+36	12+12+12+18	6+6+9+12+30	9+9+12+12+18	
			6+9+18+18	12+12+12+24	6+6+9+18+18	9+12+12+12+12	
			6+9+18+24	12+12+18+18	6+6+9+18+24	12+12+12+12+12	



MPC-SYS

Combination Table 60MPC6-HE / 55MPC6-HH

Two Units	Three Units		Four Units			Five Units			Six Units
9+30	6+6+24	9+18+24	6+6+6+18	6+9+12+24	9+9+12+30	6+6+6+6+12	6+6+9+12+36	6+9+12+12+24	6+6+6+6+6+6
9+36	6+6+30	9+18+30	6+6+6+24	6+9+12+30	9+9+12+36	6+6+6+6+18	6+6+9+18+18	6+9+12+12+30	6+6+6+6+6+9
12+24	6+6+36	9+18+36	6+6+6+30	6+9+12+36	9+9+18+18	6+6+6+6+24	6+6+9+18+24	6+12+12+12+12	6+6+6+6+6+12
12+30	6+9+24	9+24+24	6+6+6+36	6+9+18+18	9+9+18+24	6+6+6+6+30	6+6+9+18+30	6+12+12+12+18	6+6+6+6+6+18
12+36	6+9+30	9+24+30	6+6+9+18	6+9+18+24	9+9+18+30	6+6+6+6+36	6+6+12+12+12	6+12+12+12+24	6+6+6+6+6+24
18+18	6+9+36	9+24+36	6+6+9+24	6+9+18+30	9+9+18+36	6+6+6+9+9	6+6+12+12+18	6+12+12+12+30	6+6+6+6+6+30
18+24	6+12+18	12+12+12	6+6+9+30	6+9+18+36	9+12+12+12	6+6+6+9+12	6+6+12+12+24	9+9+9+9+9	6+6+6+6+9+9
18+30	6+12+24	12+12+18	6+6+9+36	6+12+12+12	9+12+12+18	6+6+6+9+18	6+6+12+12+30	9+9+9+9+12	6+6+6+6+9+12
18+36	6+12+30	12+12+24	6+6+12+12	6+12+12+18	9+12+12+24	6+6+6+9+24	6+6+12+12+36	9+9+9+9+18	6+6+6+6+9+18
24+30	6+12+36	12+12+30	6+6+12+18	6+12+12+24	9+12+12+30	6+6+6+9+30	6+6+12+18+18	9+9+9+9+24	6+6+6+6+9+24
24+36	6+18+18	12+12+36	6+6+12+24	6+12+12+30	9+12+12+36	6+6+6+9+36	6+6+12+18+24	9+9+9+9+30	6+6+6+6+9+30
30+30	6+18+24	12+18+18	6+6+12+30	6+12+12+36	9+12+18+18	6+6+6+12+12	6+6+12+18+30	9+9+9+9+36	6+6+6+6+9+36
30+36	6+18+30	12+18+24	6+6+12+36	6+12+18+18	9+12+18+24	6+6+6+12+18	6+9+9+9+9	9+9+9+12+12	6+6+6+9+9+9
	6+18+36	12+18+30	6+6+18+18	6+12+18+24	9+12+18+30	6+6+6+12+24	6+9+9+9+12	9+9+9+12+18	6+6+6+9+9+12
	6+24+24	12+18+36	6+6+18+24	6+12+18+30	12+12+12+12	6+6+6+12+30	6+9+9+9+18	9+9+9+12+24	6+6+6+9+9+18
	6+24+30	12+24+24	6+6+18+30	6+12+18+36	12+12+12+18	6+6+6+12+36	6+9+9+9+24	9+9+9+12+30	6+6+6+9+9+24
	6+24+36	12+24+30	6+6+18+36	9+9+9+9	12+12+12+24	6+6+6+18+18	6+9+9+9+30	9+9+12+12+12	6+6+6+9+9+30
	9+9+18	12+24+36	6+6+24+24	9+9+9+12	12+12+12+30	6+6+6+18+24	6+9+9+9+36	9+9+12+12+18	6+6+6+9+9+36
	9+9+24	18+18+18	6+9+9+12	9+9+9+18	12+12+12+36	6+6+9+9+9	6+9+9+12+12	9+9+12+12+24	6+6+9+9+9+9
	9+9+30	18+18+24	6+9+9+18	9+9+9+24	12+12+18+18	6+6+9+9+12	6+9+9+12+18	9+9+12+12+30	6+6+9+9+9+12
	9+9+36	18+18+30	6+9+9+24	9+9+9+30	12+12+18+24	6+6+9+9+18	6+9+9+12+24	9+12+12+12+12	6+6+9+9+9+18
	9+12+18	18+18+36	6+9+9+30	9+9+9+36	12+12+18+30	6+6+9+9+24	6+9+9+12+30	9+12+12+12+18	6+6+9+9+9+24
	9+12+24	18+24+24	6+9+9+36	9+9+12+12	12+18+18+18	6+6+9+9+30	6+9+9+12+36	9+12+12+12+24	6+6+9+9+9+30
	9+12+30	18+24+30	6+9+12+12	9+9+12+18	12+18+18+24	6+6+9+9+36	6+9+9+18+18	12+12+12+12+12	6+9+9+9+9+9
	9+12+36	24+24+24	6+9+12+18	9+9+12+24	18+18+18+18	6+6+9+12+12	6+9+9+18+24	12+12+12+12+18	6+9+9+9+9+12
	9+18+18					6+6+9+12+18	6+9+9+18+30	12+12+12+12+24	6+9+9+9+9+18
						6+6+9+12+24	6+9+12+12+12	12+12+12+18+18	9+9+9+9+9+9
						6+6+9+12+30	6+9+12+12+18		9+9+9+9+9+12
									9+9+9+9+9+18
									9+9+9+9+9+24



**33380 Zeiders Road, Suite 101
Menifee, CA 92584**

Phone 888-741-9775

Fax 760-480-8904

www.multimfg-usa.com